



INTERNAL CARBON PRICING

Kelly Baalouchi, Sr. Financial Operations Manager, GES & EHS

Jeff Doan, Director, GES Conservation and Engagement

The Boeing Company

MY PERSONAL BRAND



I am an executive change agent who pioneers positive and impactful transformation, while fostering inner peace.

I do this by modeling healthy relationships, empathy and helping to solve complex problems.

Committed to building Confidence and Trustworthiness


AUDIENCE



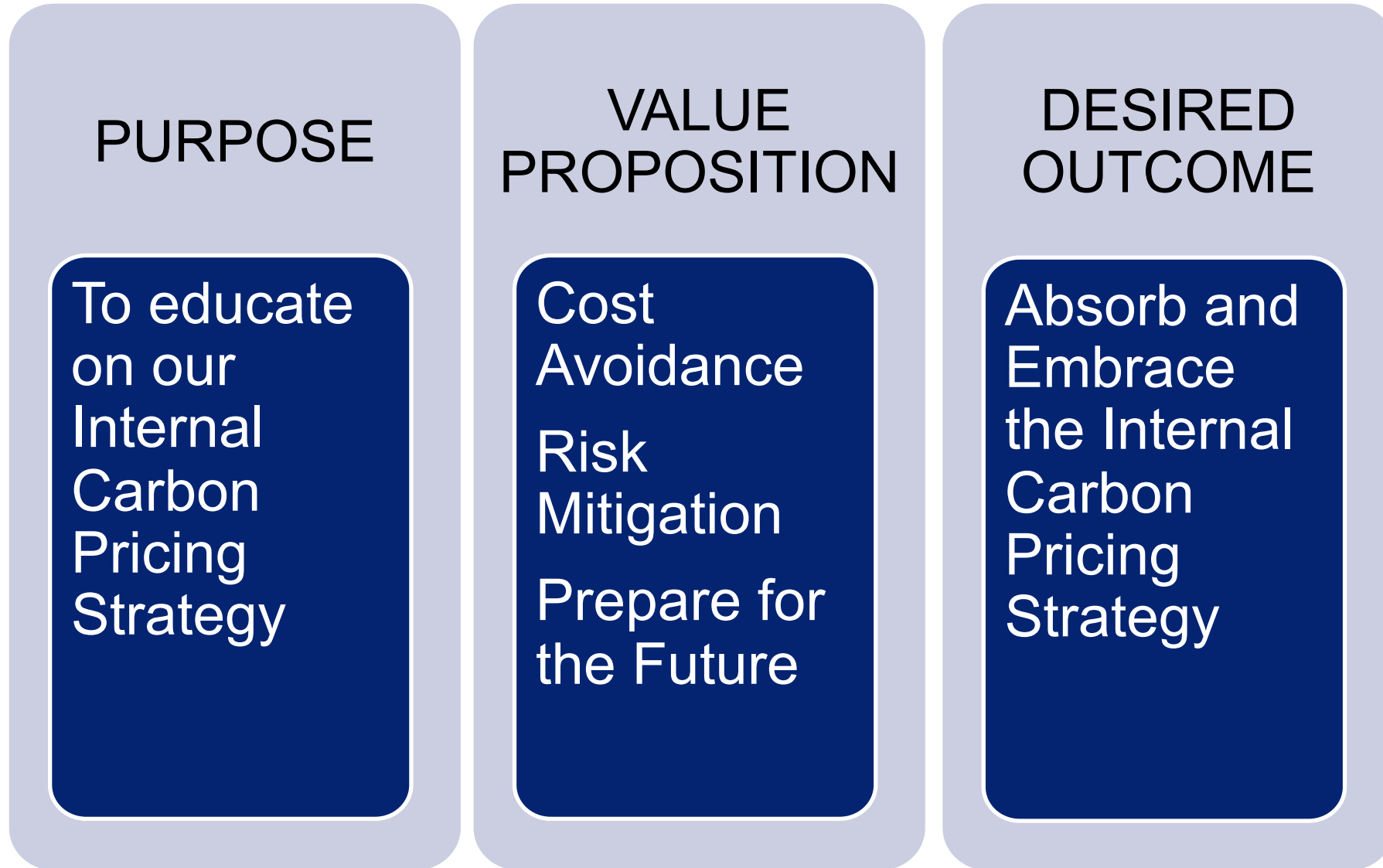
**WHEN YOU THINK ABOUT CARBON
EMISSIONS, WHAT DO YOU SEE?**







Sustainable operations
founded on robust
decision-making.



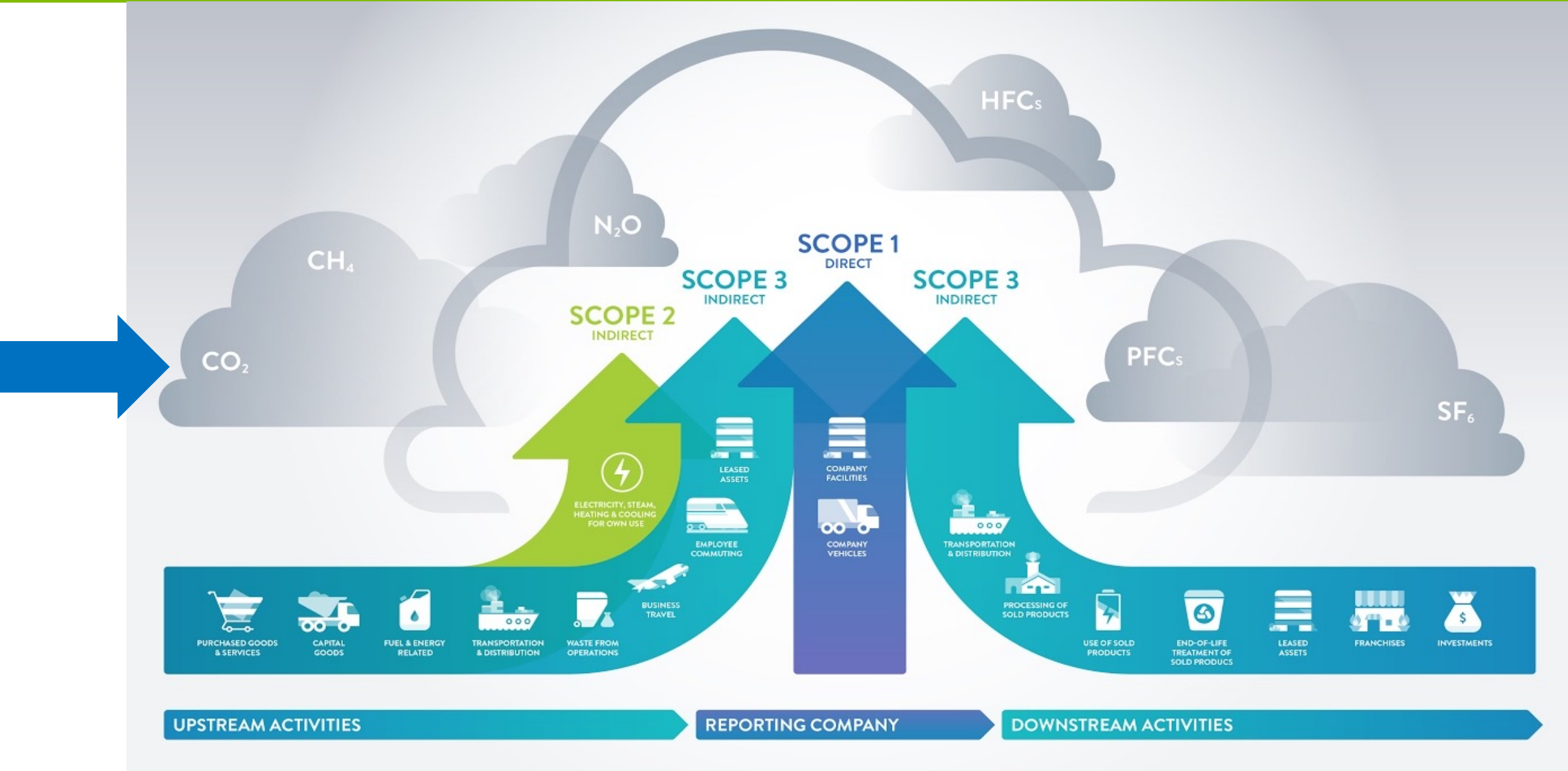
AGENDA

- What are Carbon Emissions?
- Putting a Price on Carbon
- Boeing's Internal Carbon Price Strategy

WHAT ARE CARBON EMISSIONS?

H – Highlight the 1st Point

H – Hottest Topic Starts



1,000,000 MT = \$10,000,000

BOEING'S EMISSIONS REDUCTION GOALS

R – Relevant Information

E – Ease to Next Point



2025 – reduce by 25%

2030 – reduce by 55%

PUTTING A PRICE ON CARBON

H – Highlight the 2nd Point

O – OK So What



Nearly half of world's biggest companies factoring cost of carbon into business plans

April 21 2021



Source: CDP Report 2021: Putting A Price on Carbon

PUTTING A PRICE ON CARBON



Nearly half of world's biggest companies factoring cost of carbon into business plans

April 21 2021



Source: CDP Report 2021: Putting A Price on Carbon

PUTTING A PRICE ON CARBON



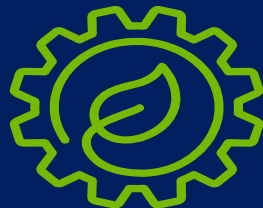
Internal Carbon Price



What does it achieve?



How is the price set?



How does it work?

WHAT IS INTERNAL CARBON PRICING?

H – Highlight the 3rd Point


O – OK So What

R – Relevant Information

E – Ease to Finish Strong

BOEING'S ICP STRATEGY



A vibrant blue sky with large, fluffy white cumulus clouds. The clouds are bright and appear to be illuminated from above, creating a sense of depth and texture. The sky transitions from a deep blue at the top to a lighter, turquoise blue near the horizon. The overall mood is bright and optimistic.

Sustainable operations
founded on robust
decision-making.